



WELCOME TO THE 2012 HONDA INDY TORONTO!

HONDA INDY TORONTO STAGING (Monday, July 2, 2012 at 11:00 AM)

Staging for race/support/hospitality vehicles will begin at 11:00 AM Monday, July 2, 2012. The staging lot is located on Cherry Street just south of Commissioners Street (**Directions on Page 3**).

- ❖ DO NOT ARRIVE PRIOR TO 11:00AM AS YOU WILL NOT BE ALLOWED IN THE LOT
- ❖ PLEASE BE SURE THAT VEHICLES ARE LOCKED AND SECURE
- ❖ BE SURE TO PARK AS CLOSE TO OTHER TRANSPORTERS AS POSSIBLE
- ❖ DO NOT LEAVE DETACHED TRAILERS!!! ALL UNITS MUST REMAIN ATTACHED

VEHICLE WASHING (Monday, July 2, 2012 at 12:00 PM)

Concord Mobile Wash will be on-site from 12:00 PM Monday, July 2nd, 2012. Initial priority will be given to Hospitality Units, then Series and Owner/Driver Coaches.

Contacts: Steve Damianidis 905-761-9960
416-896-4708

NOTE – THE ONLY LOCATION AVAILABLE FOR VEHICLE WASHING IS AT THE STAGING LOT, NO VEHICLE WASHING IS ALLOWED ON THE RACE EVENT SITE

DEC PADDOCK LOAD-IN (Wednesday, July 4, 2012)

NOTE – DO NOT LEAVE THE STAGING LOT UNTIL INSTRUCTED BY A HONDA INDY TORONTO OR SERIES OFFICIAL

Wednesday, July 4, 2012 from 8:00 AM – 12:00 PM

- ❖ FERRARI CHALLENGE TEAMS – TRANSPORTERS (DEC)

Wednesday, July 4, 2012 from 12:00 PM – 2:00 PM

- ❖ STAR MAZDA TEAMS – TRANSPORTERS (DEC)

If there are any questions or concerns, please contact:

Michael Gaid
mgaid@hondaindytoronto.com
647-684-2670

Kim Green
kgreen@greensavoree.com
416-676-5499



CONTACT SHEET

HONDA INDY TORONTO KEY CONTACTS

Michael Gaid
Operations Coordinator
(p) 647-648-2670
mgaid@hondaindytoronto.com

Matt Sherman
Exhibitor Services Coordinator
(p) 416-588-7223 x 218
msherman@hondaindytoronto.com

Torchia Communications
Kathleen Stelmach
Media and Public Relations
(p) 416-341-9929
Kathleen@torchia.com

Jeff Atkinson
Sales Manager
(p) 416-676-7841
jatkinson@hondaindytoronto.com

Monica Rey
Credentials Coordinator
(p) 416-588-7223 x 216
mrey@hondaindytoronto.com

Mike Raven
Customer Service & Ticketing
(p) 416-588-7223 x 219
mraven@hondaindytoronto.com

ON-SITE SUPPLIER CONTACTS

Audio Visual Equipment
Palmer Audio
Scott Pollard
(p) 519-223-4545
scottpollard@palmeraudio.com

Furnishing Rentals and Décor
Stronco
Mike Farrell
(p) 905-270-6767 x 2237
mike.f@stronco.com

Ice
Ice Boy
Rob Gould
416-423-4968
rob@iceboy.ca

Tent Rentals
Regal Tent
Michelle McCulloch
(p) 800-364-4430 x 15
michelle@regaltent.com

Port-O-Lets/Motorhome Pumper
Nature's Call
Saverio Marchese
(p) 416-677-2514
smarchese@naturescall.ca

Electrical Services/Plumbing
Direct Energy Centre
Tasleem Lokhat
(p) 416-263-3064
tlokhat@directenergycentre.com

Golf Cars
Albion Golf Cars
Chet Long
(p) 416-236-1001
chet@albiongolfcars.com

Security
Federal Security Agency
Harry Peckham
(p) 416-323-9911
harry.peckham@fedsec.ca

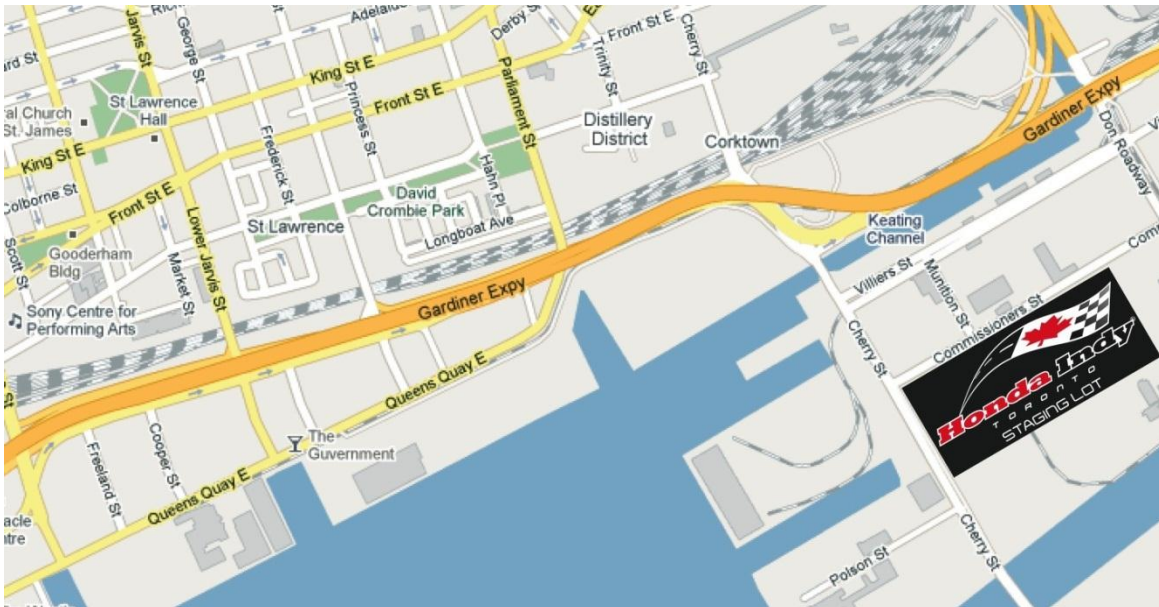
Telephones
Direct Energy Centre
Tasleem Lokhat
(p) 416-263-3064
tlokhat@directenergycentre.com

DIRECTIONS TO HONDA INDY TORONTO STAGING LOT

Located at 51 Commissioners Street

Entrance on Cherry Street just south of Commissioners Street

- ❖ **GARDINER EXPRESSWAY EAST** through **TORONTO**
- ❖ Exit **JARVIS ST.** (follow signs for **PORT OF TORONTO**). At bottom of **JARVIS ST.** ramp (stoplight), continue **STRAIGHT** onto **LAKE SHORE BLVD. EAST** (stay to the **RIGHT...DO NOT** get back on **EXPRESSWAY**)
- ❖ **LAKE SHORE BLVD. EAST** runs underneath the **GARDINER EXPRESSWAY**. Stay in **RIGHT LANE** and follow signs to **PORT OF TORONTO**.
- ❖ Turn **RIGHT** onto **CHERRY ST.**
- ❖ After crossing bridge, **COMMISSIONERS STREET** is the **SECOND STREET** (there is a large pedestrian crossover marked with overhead signs).
- ❖ **HIT STAGING LOT** is located on the **EAST SIDE** of **CHERRY ST.** (approximately $\frac{1}{4}$ mile past **COMMISSIONERS ST.**) look for the **HONDA INDY TORONTO STAGING LOT SIGN**.



**ACCESS FOR THE STAGING LOT BEGINS AT
11:00 AM, MONDAY JULY 2, 2012
PLEASE DO NOT ARRIVE BEFORE THAT TIME**

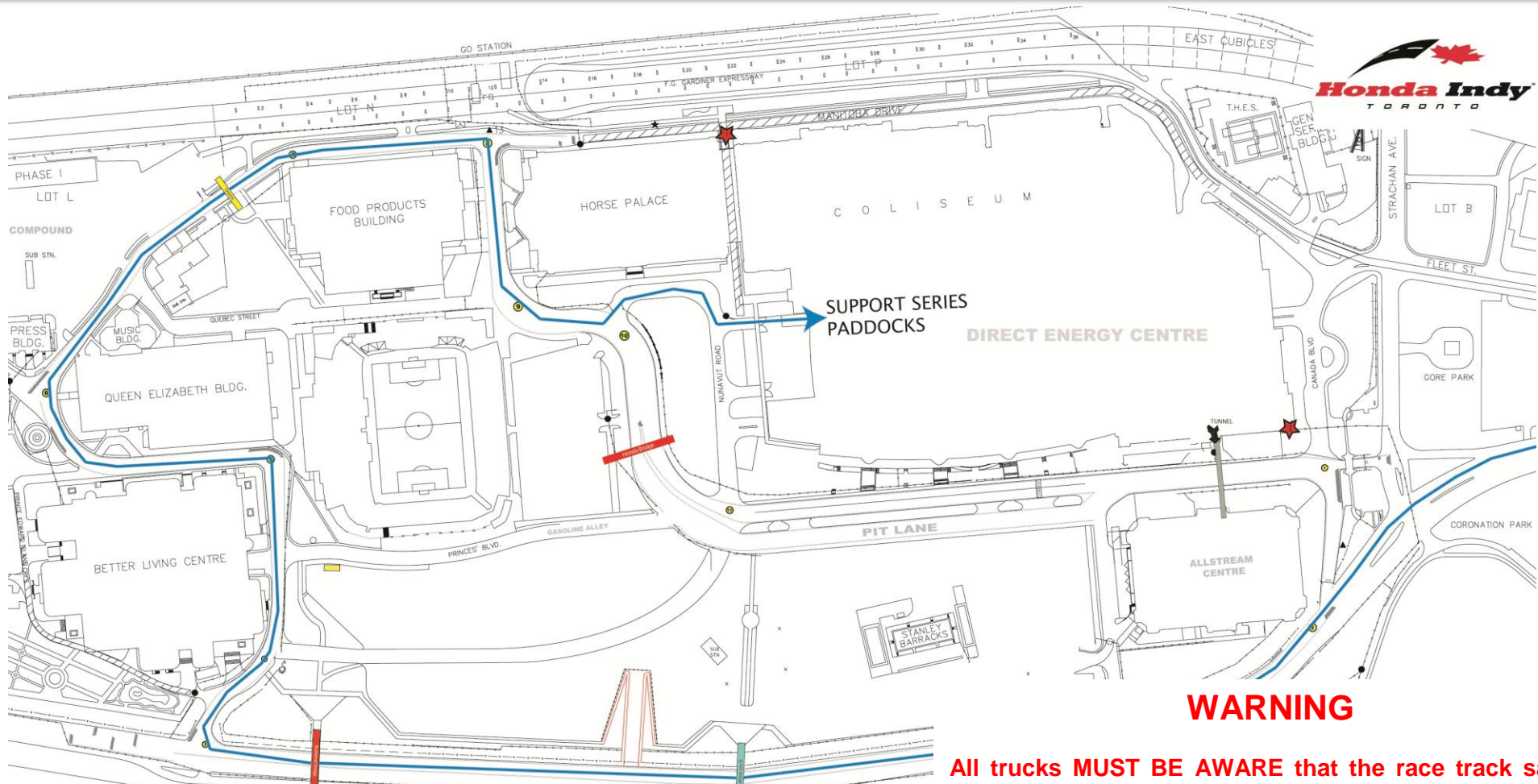
DIRECTIONS FROM STAGING AREA TO TRACK



Ferrari Challenge (July 4th, 2012 8:00 AM – 12:00 PM)

Star Mazda (July 4th, 2011 12:00 PM – 2:00 PM)

1. Turn **RIGHT** out of the staging lot onto **CHERRY STREET**
2. As **CHERRY STREET** turns **SLIGHTLY LEFT**, continue on **LAKE SHORE BOULEVARD**
3. Continue on **LAKE SHORE BOULEVARD** into **TURN 2** of the track through the break in the wall
4. Turn **RIGHT** at **ONTARIO DRIVE (TURN 3)**
5. Turn **LEFT** onto **PRINCES BOULEVARD (TURN 5)**
6. At the fork turn **RIGHT** onto **MANITOBA DRIVE (TURN 6)**
7. Turn **RIGHT** onto **NOVA SCOTIA AVENUE (TURN 8)**
8. Before Pit Entrance, turn **LEFT** at the break in the wall
9. Follow the entrance into the **DIRECT ENERGY CENTRE WEST LOADING DOCK**



WARNING

All trucks **MUST BE AWARE** that the race track safety fence overhangs the race track both drivers left and right in all areas of the track – when proceeding around the track to your specific paddock / parking location make sure you allow enough clearance to your vehicle on both sides!!!

If there are any questions or concerns, please contact:

Michael Gaid
mgaid@hondaindytoronto.com
(647) 684 - 2670

Kim Green
kgreen@greensavoree.com
(416) 676 - 5499